

ANIMAL SHELTER BUILDING COMMITTEE

MINUTES –DECEMBER 8, 2016

PRESENT: Patricia Cloutier, Lee Cassidy
Non-members – Shawn Cadine T/A, David Cabral DPW

Meeting called to order 5:26 PM by Chairperson Patricia Cloutier

Minutes from November 17, 2016, approved

NEW ADDITION TO ANIMAL SHELTER – Discussion on New building sq. ft., HVAC, roof-line, concrete building . Feasibility study first. Possible donation from SAPS to help with cost.

Next meeting TBD – In the meantime, Chair meeting with DPW again in December.

Meeting adjourned PM

Respectively submitted

Patricia Cloutier
Chair

ANIMAL SHELTER BUILDING COMMITTEE

MINUTES –AUGUST 18, 2016

PRESENT: Patricia Cloutier, Sharon Hall, Lee Cassidy

Meeting called to order 5:20 PM by Chairperson Patricia Cloutier

Previous minutes

NEW ADDITION TO ANIMAL SHELTER. How to reduce cost of new addition –
Seek volunteers to do painting, framing and other to cut down on cost from
prevailing wage.

Need more information on “block building”. Check with ACO at Attleboro shelter.

Tentative meeting August 22, 2016 to review above.

Meeting adjourned 6:35 PM

Respectively submitted

Patricia Cloutier
Chair

ANIMAL SHELTER BUILDING COMMITTEE

MINUTES –NOVEMBER 1, 2016

PRESENT: Patricia Cloutier, Sharon Hall, Lee Cassidy

Meeting called to order 5:26 PM by Chairperson Patricia Cloutier

Minutes from September 12, 2016, approved

NEW ADDITION TO ANIMAL SHELTER – Alternate sketch of building reviewed and discussed. Further discussion of type of building.

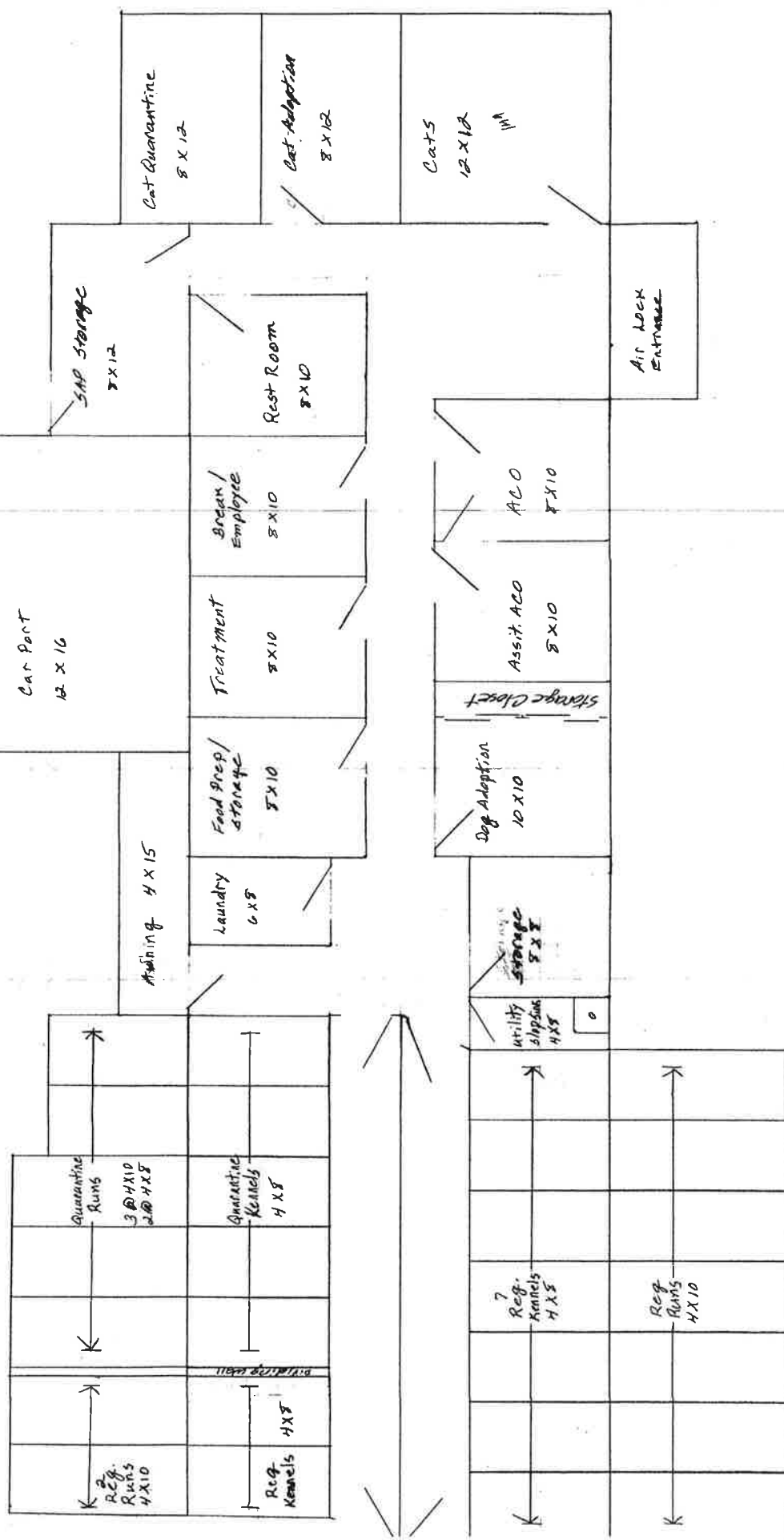
Reviewed discussion with T/A and DPW .

Next meeting November 17, 2016

Meeting adjourned 6:35 PM

Respectively submitted

Patricia Cloutier
Chair



ANIMAL SHELTER BUILDING COMMITTEE

MINUTES –NOVEMBER 17, 2016

PRESENT: Patricia Cloutier, Sharon Hall, Lee Cassidy

Meeting called to order 5:26 PM by Chairperson Patricia Cloutier

Minutes from November 1, 2016, approved

NEW ADDITION TO ANIMAL SHELTER –Further review of new sketch for addition and the high cost. Discussion of the possibility of going forward with a whole new building. New sketch to be drawn.

Next meeting TBD – In the meantime, Chair meeting with DPW in December.

Meeting adjourned 6:40PM

Respectively submitted

Patricia Cloutier
Chair

ANIMAL SHELTER BUILDING COMMITTEE

MINUTES -AUGUST 18, 2016

PRESENT: Patricia Cloutier, Sharon Hall, Lee Cassidy

Meeting called to order 5:20 PM by Chairperson Patricia Cloutier

Previous minutes from July 28, 2015 approved

NEW ADDITION TO ANIMAL SHELTER. How to reduce cost of new addition -
Seek volunteers to do painting, framing and other to cut down on cost from
prevailing wage.

Need more information on "block building". Check with ACO at Attleboro shelter.

Tentative meeting August 22, 2016 to review above.

Meeting adjourned 6:35 PM

Respectively submitted

Patricia Cloutier
Chair

ANIMAL SHELTER BUILDING COMMITTEE

MINUTES –AUGUST 22, 2016

PRESENT: Patricia Cloutier, Sharon Hall, Lee Cassidy

Meeting called to order 5:18 PM by Chairperson Patricia Cloutier

Minutes from August 18, 2016 approved

NEW ADDITION TO ANIMAL SHELTER. Further discussion on how to reduce cost of new addition – One member has means of obtaining paint at cost and has spoken to several painters who would volunteer their time. Still investigating the possibility of volunteer plumbers, framers. Further discussion on “block building”.

Further discussion on determining “Clerk of the Works” if necessary.

Next meeting TBD

Meeting adjourned 6:25 PM

Respectively submitted

Patricia Cloutier
Chair

ANIMAL SHELTER BUILDING COMMITTEE

MINUTES –SEPTEMBER 12, 2016

PRESENT: Patricia Cloutier, Sharon Hall, Lee Cassidy

Meeting called to order 5:20 PM by Chairperson Patricia Cloutier

Minutes from August 22, 2016 approved

NEW ADDITION TO ANIMAL SHELTER. Advantages and disadvantages of steel building. Several companies have given “off the cuff” estimates. Basically, a shell would be delivered and to finish the interior would be costly due to prevailing wage. Discussion of Fire Resistant Walls for certain rooms – colors and cleaning.

More discussion on “Clerk of the Works” if necessary.

Chair to meet with T/A and DPW Super in next few weeks to further discuss building type.

Next meeting TBD

Meeting adjourned 6:45 PM

Respectively submitted

Patricia Cloutier
Chair